

One Mark for All of Your Custom Robotic Cells

TÜV Rheinland Robot
Integrator Program



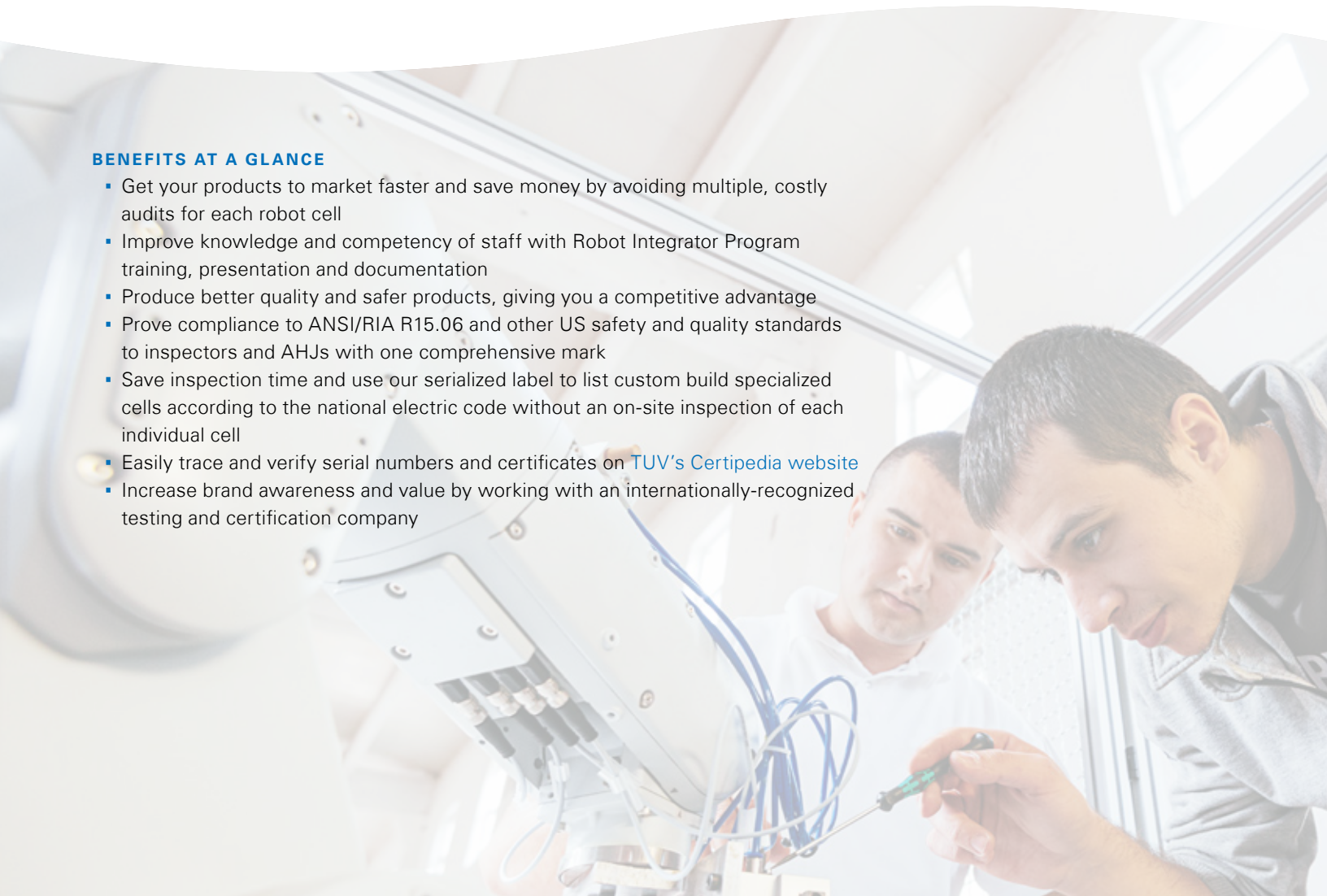
TÜV Rheinland: Your Global Partner for Industrial Robotic Cell ANSI/RIA R15.06 Certification

The demand for custom robotic cells is growing as companies continue to integrate industrial robots into their processes for everything from assembly lines, complex machining, to picking and packaging, and welding. New and innovative robot cells with advanced vision sensors, new tooling and end effectors, and part-feeding mechanisms are increasingly being implemented across all industries. Industrial robotics manufacturers need a global, proven and innovative partner to help them test and ensure their custom robotic cells are safe and secure. This is where TÜV Rheinland comes in.

TÜV Rheinland's innovative Robot Integrator Program gives manufacturers the opportunity to use a single mark to certify all of their custom robotic cells as meeting ANSI/RIA R15.06. This mark allows a manufacturer to list all robotic cells produced, as long as they are fully compliant with each required robotics standard and the conditions of the Robot Integrator Program. Once approved by TÜV Rheinland's auditors, the mark issued can be recognized by future inspectors, Authorities Having Jurisdiction (AHJs) and others as a symbol that the robot cell is compliant with each standard listed on the label.

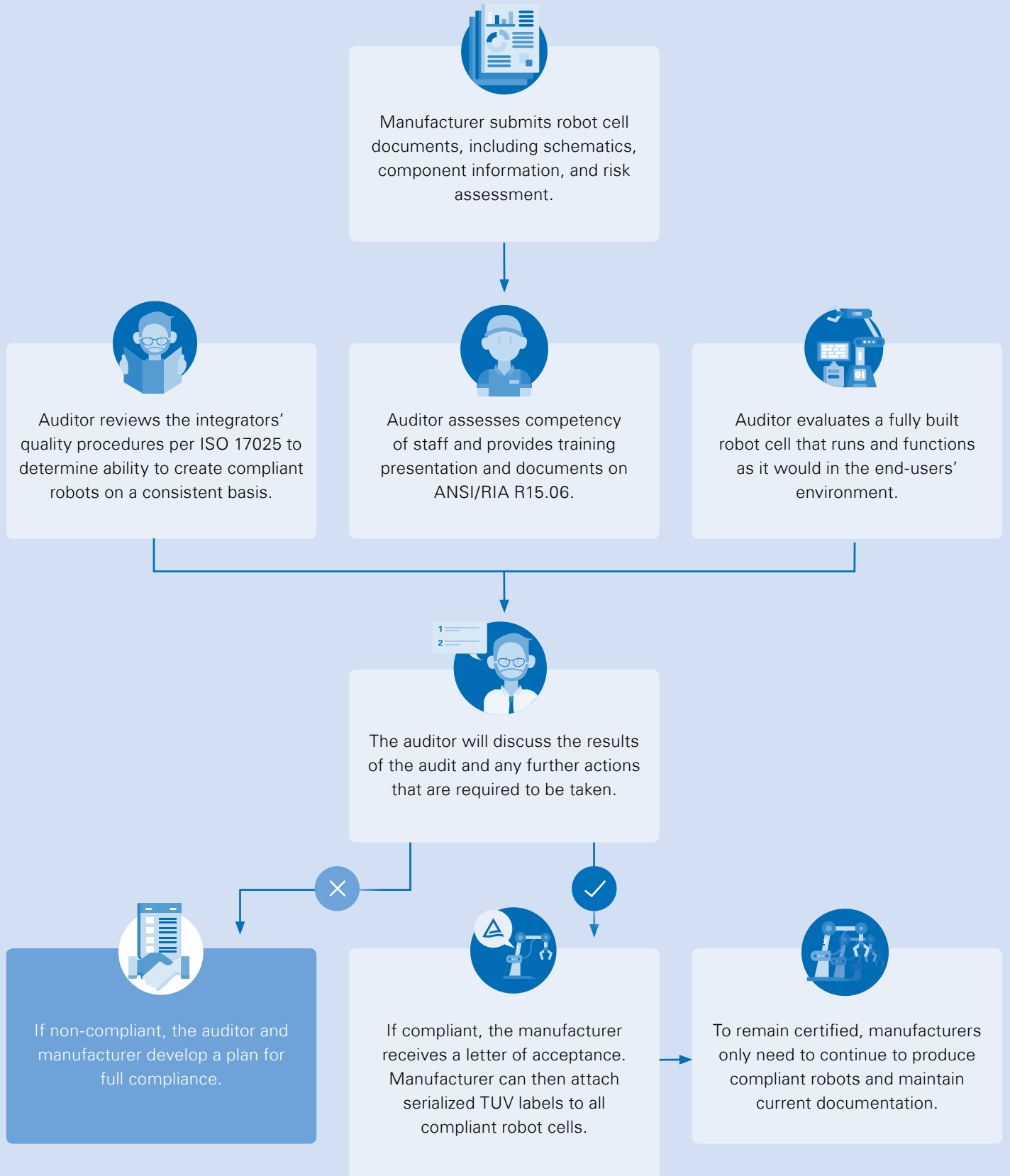
BENEFITS AT A GLANCE

- Get your products to market faster and save money by avoiding multiple, costly audits for each robot cell
- Improve knowledge and competency of staff with Robot Integrator Program training, presentation and documentation
- Produce better quality and safer products, giving you a competitive advantage
- Prove compliance to ANSI/RIA R15.06 and other US safety and quality standards to inspectors and AHJs with one comprehensive mark
- Save inspection time and use our serialized label to list custom build specialized cells according to the national electric code without an on-site inspection of each individual cell
- Easily trace and verify serial numbers and certificates on [TUV's Certipedia website](#)
- Increase brand awareness and value by working with an internationally-recognized testing and certification company



Robot Integrator Program Audit Process

OVERVIEW



SCHEDULE AN AUDIT TO JOIN TÜV RHEINLAND'S ROBOT INTEGRATOR PROGRAM

Joining TÜV Rheinland's Robot Integrator Program is simple. Follow these three initial steps to get started:

STEP 1

Submit an application or formal request.

STEP 2

TÜV Rheinland will issue a formal quote for the prospective work upon review of the application. Upon scope of work acceptance, TÜV will schedule the qualifying audit.

STEP 3

In preparation of the audit, provide documentation showcasing all types of robot cells produced.



WORKING WITH TÜV RHEINLAND

TÜV Rheinland's extensive knowledge and experience in the robotics industry allows our experts to provide services that can boost your company's competitive edge, including performing both risk assessments and safety circuit evaluations. With state-of-the-art laboratories located around the world and an international reputation for excellence, TÜV Rheinland is proud to support your goals for compliance, safety and functionality in the fast-paced robotics industry.

TÜV Rheinland
295 Foster Street #100
Littleton, MA 01460
1-888-743-4652
info@tuv.com
www.tuv.com



© TÜV, TÜEV and TUV are registered trademarks. Utilisation and application requires prior approval.