



Contact
mobilitaet@tuv.com
to enquire our valuable
Market Access
Data Packages!

Our Research Data On M1 Vehicle Components:
Your Access To New Markets!

Manufacturers Ask Us For Regulatory Research Support...

because they do not have:

any idea where to start their expansion plan

experience to study target markets within their expansion plan

resources to manage complexity of their expansion plan
(e.g. number of countries, local languages, local certification system, local technical standards, lack of information provided by authority)

knowledge to reduce efforts within their multi-national expansion plan



We Have About 80 Market Access Engineers Around The Globe To...

equip manufacturers with knowledge on market access requirements and procedures

enable manufacturers to make strategic decisions on which markets to choose

deliver starting points to manufacturers to launch the certification procedure

advise manufacturers how to streamline testing-work based on certificates they have at hand





Contact
mobilitaet@tuv.com
to enquire our valuable
Market Access
Data Packages!

Exploit Our Valuable Insights And Profound Knowledge!

We compiled valuable data packages from real customer projects on M1 vehicle components!



Each data package contains a set of Regulation Research reports for a comprehensive list of countries



Each report describes the certification system background (authority name, technical requirements, certification workflow, applicable standards etc).

Scope Of Market Access Data Packages For M1 Vehicle Components

Sl. No.	Components	No. of Countries	Regulations Database for “A” product	
1	AL Wheel	67	• Ministry in Charge	• Marking required
2	Light and Signalling	73	• Authority	• Application scope
3	Bulb	64	• Mandatory Rules / Regulations	• Exceptions for use
4	Brake Pads + Brake Hose	68	• Applicable Standards	• Related products
5	Traction Battery	68	• Test requirements	• Certificate holder
6	Lead-Acid Battery	45	• Certification required	• Certification process
7	Safety Glazing	81	• Mandatory Marks	• Documents required
...		
44	Automotive EMC	~65		



- 7 data packages instantly available, another 37 components on request.
- If you buy the data packages you will receive free updates.

Product		AL Wheel
Scope:		Mandatory regulations/standards/approvals on country level
Project No.		Q-GT-2024-BD AL 1
Version:		01
Issue Date:		03.01.2024

#	Country	Industry	Ministry	Authority Information	Technical Service / Agency	Scope	Exceptions	Laws	Mandatory Regulations/ Standards	Mandatory Certification	Mark	Technical Requirement List	Related Products	Certification System	Certificate Holder	Certification Process_New	Certification Process_Change/Addition	Certification Process_Post Control	Certification Process_Lead Time
1	Albania	Automotive	Department of Transport	Type approval Authority	TUV Rheinland	New replacement wheels designed for vehicles of Categories M1, M1G, N1, N1G, O1 and O2	Original equipment wheels or vehicle manufacturer's replacement wheels, Special wheels, Wheels with less than three-wheel fixing components (studs or nuts) which are not identical replacement wheels	1958 Agreement	UN R124 : Uniform provisions concerning the approval of wheels for passenger cars and their trailers	E Mark	Refer to Tab Mark E	Material test, Corrosion test, Rotating bending test, Rolling test, Impact test, Alternating torque test	Wheel, Steel wheels, Aluminium alloy wheels, Magnesium alloy wheels	Type Approval	Manufacturer / Importer / Local Representative		Refer to Cert Pross. Mark E		
2	Argentina	Automotive	Ministry of Productive Development of Argentina	INTI (INSTITUTO NACIONAL DE TECNOLOGIA INDUSTRIAL / National Institute of Industrial Technology)	Technical Service / INTI / IRAM(Instituto Argentino de Normalización y Certificación / Argentine Standardization and Certification Institute) * TÜV Rheinland	Wheel	Spare parts declared as original spare parts by the holders of the LCM do not need to be certified. Also, they must meet the identical specifications in terms of design, materials, manufacturing and control processes, functionality and performance with respect to those intended for manufacturing.	Ley 24449 : LEY DE TRANSITO (TRANSIT LAW)	1. Decreto 32-2018 : Modification of Decree No. 779/1995 and Ley 24449 2. Resolucion 166/2019 : Requirements of certification for vehicle components 3. UN R124 - Uniform provisions concerning the approval of wheels for passenger cars and their trailers	CHAS (Certificado de Homologación de Autopartes y/o Elementos de Seguridad / Certificate of Homologation of Auto Parts and/or Safety Elements) * (1) CAPE (Certificado de Autoparte Primer Equipo / First Equipment Auto Part Certificate) *	Refer to Tab Mark CHAS	Material test, Corrosion test, Rotating bending test, Rolling test, Impact test, Alternating torque test	Wheel, Steel wheels, Aluminium alloy wheels, Magnesium alloy wheels	Type Approval	Manufacturer / Importer / Local Representative		Refer to Cert Pross. Mark CHAS		
3	Armenia	Automotive	Department of Transport	Type approval Authority	TUV Rheinland	For vehicles of Categories M1, M1G, N1, N1G, O1 and O2	wheels, Wheels with less than three-wheel fixing components (studs or nuts) which are not identical replacement wheels	1958 Agreement	concerning the approval of wheels for passenger cars and their trailers	E Mark	Refer to Tab Mark E	Material test, Corrosion test, Rotating bending test, Rolling test, Impact test, Alternating torque test	Wheel, Steel wheels, Aluminium alloy wheels, Magnesium alloy wheels	Type Approval	Manufacturer / Importer / Local Representative		Refer to Cert Pross. Mark E		
4	Austria	Automotive	Department of Transport	Type approval Authority	TUV Rheinland	New replacement wheels designed for vehicles of Categories M1, M1G, N1, N1G, O1 and O2	Original equipment wheels or vehicle manufacturer's replacement wheels, Special wheels, Wheels with less than three-wheel fixing components (studs or nuts) which are not identical replacement wheels	1958 Agreement	concerning the approval of wheels for passenger cars and their trailers	E Mark	Refer to Tab Mark E	Material test, Corrosion test, Rotating bending test, Rolling test, Impact test, Alternating torque test	Wheel, Steel wheels, Aluminium alloy wheels, Magnesium alloy wheels	Type Approval	Manufacturer / Importer / Local Representative		Refer to Cert Pross. Mark E		
5	Azerbaijan	Automotive	Department of Transport	Type approval Authority	TUV Rheinland	New replacement wheels designed for vehicles of Categories M1, M1G, N1, N1G, O1 and O2	Original equipment wheels or vehicle manufacturer's replacement wheels, Special wheels, Wheels with less than three-wheel fixing components (studs or nuts) which are not identical replacement wheels	1958 Agreement	UN R124 : Uniform provisions concerning the approval of wheels for passenger cars and their trailers	E Mark	Refer to Tab Mark E	Material test, Corrosion test, Rotating bending test, Rolling test, Impact test, Alternating torque test	Wheel, Steel wheels, Aluminium alloy wheels, Magnesium alloy wheels	Type Approval	Manufacturer / Importer / Local Representative		Refer to Cert Pross. Mark E		
6	Belarus	Automotive	Department of Transport	Type approval Authority	TUV Rheinland	New replacement wheels designed for vehicles of Categories M1, M1G, N1, N1G, O1 and O2	Original equipment wheels or vehicle manufacturer's replacement wheels, Special wheels, Wheels with less than three-wheel fixing components (studs or nuts) which are not identical replacement wheels	1958 Agreement	UN R124 : Uniform provisions concerning the approval of wheels for passenger cars and their trailers	E Mark	Refer to Tab Mark E	Material test, Corrosion test, Rotating bending test, Rolling test, Impact test, Alternating torque test	Wheel, Steel wheels, Aluminium alloy wheels, Magnesium alloy wheels	Type Approval	Manufacturer / Importer / Local Representative		Refer to Cert Pross. Mark E		

Excerpt Sample Report

Contact mobiltaet@tuv.com to enquire our valuable Market Access Data Packages!

Benefit From Our Local Knowledge And Our Global Footprint!

01



Our vast scope of countries and components offer a variety of profound options to choose from!

02



Our ready-to-go data packages enable immediate action and value for your expansion plans!

03

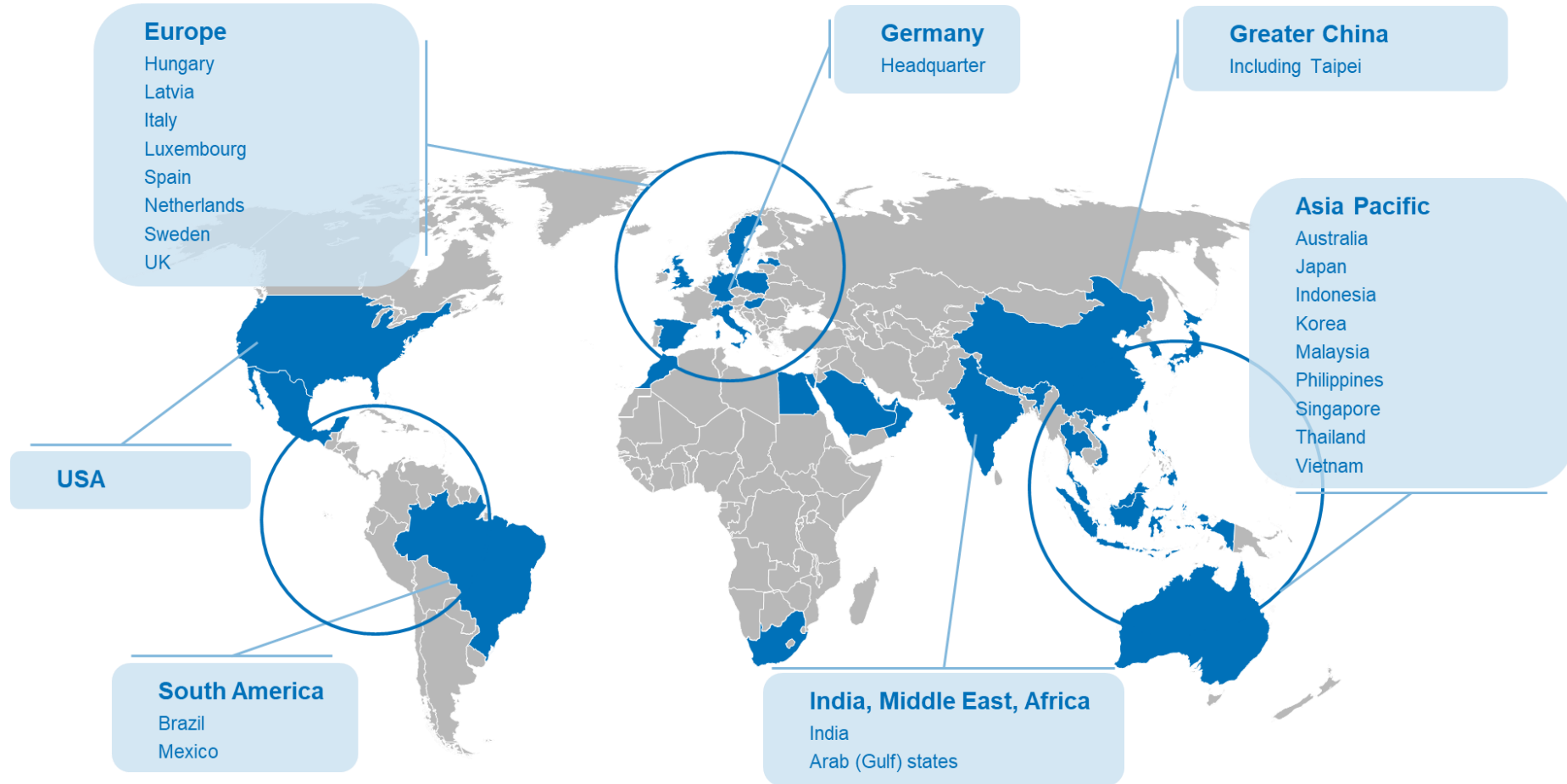


Due to our global footprint, we can easily proceed from regulatory research to certification for your country!

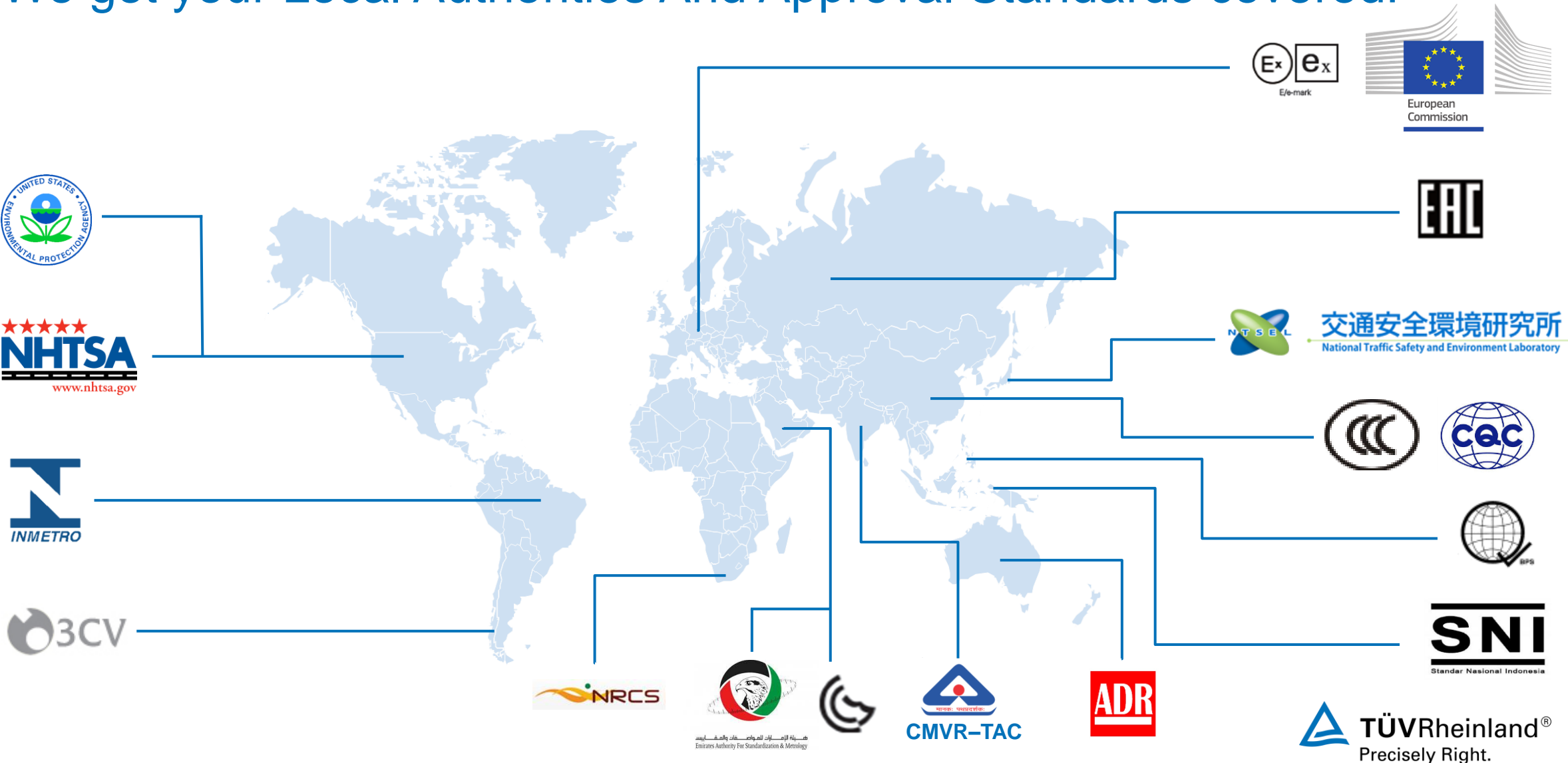
Our Global Footprint For Automotive Engineering & Homologation



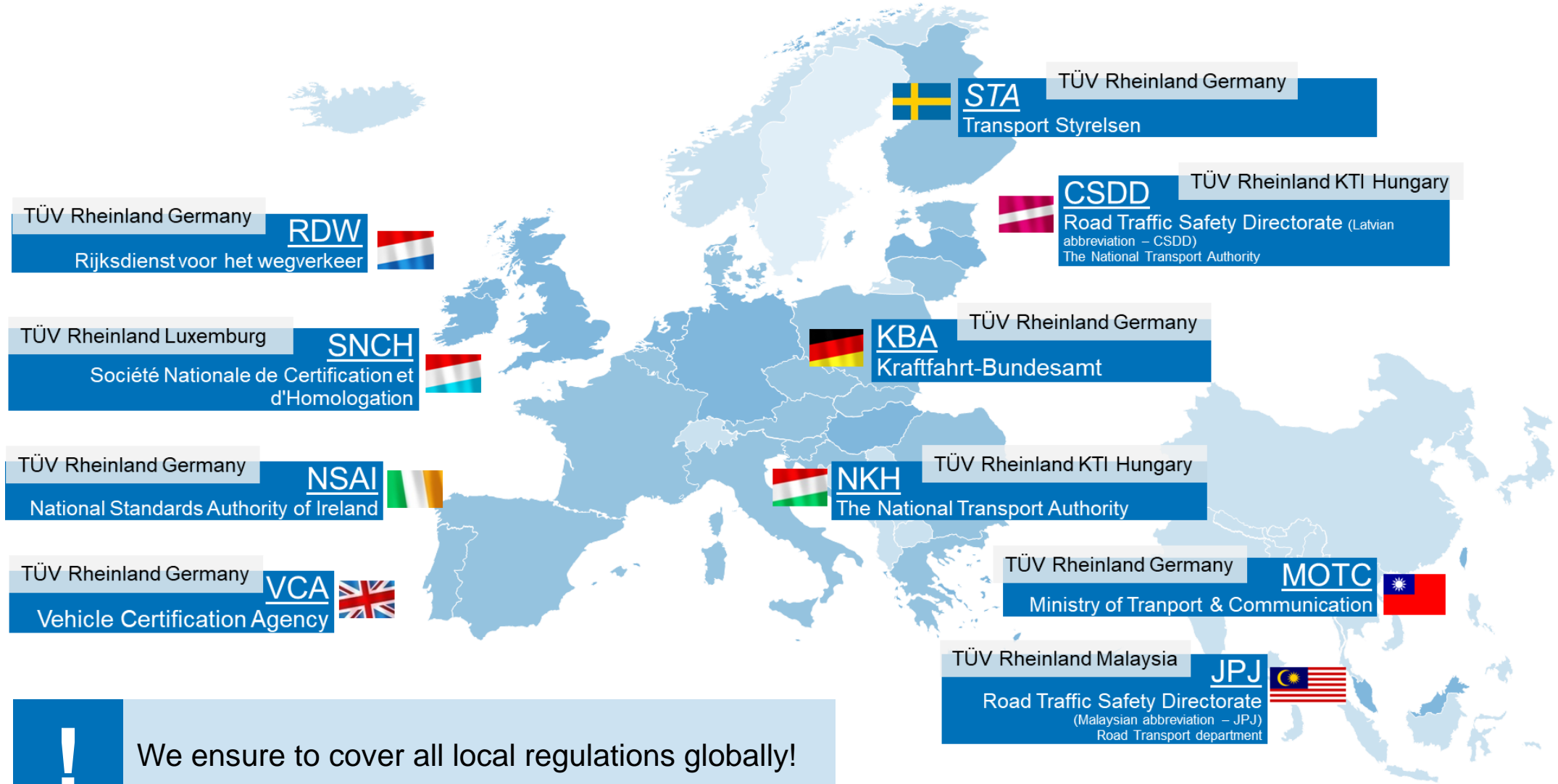
- ✓ Active on all continents
- ✓ 31 Automotive laboratories
- ✓ Full scope certification for ~25 countries
- ✓ Regulatory Research for ~150 countries
- ✓ 80 Market Access Service engineers



Our Global Network For A One-stop Shop Experience: We get your Local Authorities And Approval Standards covered!



TÜV Rheinland: Globalization As A Technical Service



Activate your global Business.

Contact mobilitaet@tuv.com to enquire our
valuable Market Access Data Packages!

